

# Mid-Western Region

New Residents Guide







# CONTENTS





Mid-Western Regional Council acknowledges the Wiradjuri people, the traditional custodians of the Wiradjuri Nation. We acknowledge their Elders past, present and future. We also acknowledge people from other nations and language groups who have now made the Mid-Western Region their home, along with the descendants of the Wiradjuri Nation.

// Lawson Park, Mudgee

Welcome .....	4
Welcome to the Mid-Western Region	4
Our region .....	6
Mudgee	6
Gulgong	6
Rylstone	7
Kandos	7
Household essentials .....	8
Waste	9
Rates .....	10
Rates	11
How to pay your rates	11
Water	11
Property .....	12
Planning and Building	12
Facilities .....	14
Libraries	14
Pets	14
Saleyards	14
Art and culture .....	16
Mudgee Arts Precinct	17
Public art collection	17
Town Hall Cinema	17
Family fun .....	18
Swimming pools	18
Mudgee Water Park	18
Venues for hire .....	20
Showgrounds	20
Halls	20
Amenities .....	22
Gulgong Adventure Playground	23
Playgrounds and skate parks	23
Parents room	23
Recreation .....	24
Glen Willow	25
Sporting fields	25
Events .....	26
Flavours of Mudgee	27
The home of football	27
Australia Day	27
Supporting our community .....	28
Family Day Care	28
Meals on Wheels	28
Mudgee Community Transport	28
Want to volunteer?	28
Roads and transport .....	30
Driving	30
Mudgee Airport	30
TrainLink services	30
Get in touch .....	32
Work with us	32
Report a problem	32
Key contacts .....	34

# Welcome to the Mid-Western Region

We're excited to welcome you to our dynamic and vibrant community brimming in lifestyle attractions, culinary delights and investment opportunities. Add to this a four-season climate, picturesque scenery, fine wine, locally grown food and a real community with heart and soul; we have a perfect lifestyle envied by others.

The Mid-Western Region covers an area of more than 8,700 square kilometres and includes the historic towns of Mudgee, Gulgong, Rylstone and Kandos, in addition to many rural villages. The region stretches from the Wollemi National Park in the east to Lake Burrendong in the west, the Goulburn River National Park in the north and to the Macquarie and Turon Rivers in the south.

The Mid-Western Region has the best of metropolitan style conveniences, whilst maintaining the safe, clean, affordable, comfortable and convenient lifestyle of a friendly country community.

We offer jobs and business opportunities in a number of industries, including agriculture, viticulture, tourism and mining. The quality and diversity of the local labour force provides the region with a real competitive edge. Our commercial, residential and retail diversity all make our region a great place to live.

There are open spaces, parks, sporting facilities, outdoor activities and a large number of events to enjoy. Local markets celebrate our culture, providing fresh local food, craft and gifts for sale. There are activities for the kids and a range of entertainment for the whole family.

## Connect with us

<b>Website</b>	<a href="http://midwestern.nsw.gov.au">midwestern.nsw.gov.au</a>
<b>Facebook</b>	@MWRCouncil
<b>Instagram</b>	@choosemudgeeregion
<b>YouTube</b>	Mid-Western Regional Council
<b>Twitter</b>	@MWRCouncil
<b>Tiktok</b>	@MWRCouncil







# WELCOME





// Cnr Church and Market Streets, Mudgee



// Mayne Street, Gulgong

## Mudgee

Mudgee is the epitome of a modern country town. Its spectacular architecture and tree-lined streets are complemented by contemporary food and shopping experiences.

From the fertile farmland surrounds comes great local produce available at cafés and restaurants in town, farm gate tours and cellar doors. Mudgee is the third largest grape-producing region in NSW, with its history of winemaking dating back to the 1850s. Many 'tree changers' now call Mudgee home, taking advantage of the convenient and affordable lifestyle opportunities.

With a range of breathtaking natural attractions, fine wine and fresh local produce, Mudgee has events to excite, an impressive boutique shopping precinct, family-friendly activities and picturesque streetscapes.

## Gulgong

Gulgong's narrow bent streets and high footpaths featured on the Australian ten dollar note for many years.

The township was founded in the gold rush era when an estimated 20,000 people flocked to the area. Whilst the streetscapes and heritage buildings haven't changed much since the late 1800s, you'll find a progressive and passionate community eager to welcome visitors and share their stories.

Taste modern local produce from a range of coffee shops and dining experiences. Each year iconic events including the Henry Lawson Festival, Gulgong Gold and Mining Festival, Gulgong Folk Festival and Gulgong Show are held. You can also find hidden treasures and local produce at the monthly Gulgong Markets.





// Louee Street, Rylstone



// Angus Avenue, Kandos

## Rylstone

In the rustic heritage town of Rylstone via the famous Bylong Valley Way, a broad range of tasty modern food awaits.

Fast becoming known for its wineries, yum cha and olive estates, Rylstone is sure to impress the fussiest of foodies. All this, coupled with some of the most spectacular scenery in the region, guarantees you will be surprised and delighted with what you find. Rylstone's charming 19th century photogenic streetscape was settled in the 1830s, making it one of the oldest settlements west of the Great Dividing Range. The town also acts as a gateway to the World Heritage-listed Wollemi National Park and the beautiful Bylong Valley, boasting sandstone rock cliffs and breathtaking vistas.

## Kandos

Once a private village and home to the largest cement works in the southern hemisphere, Kandos has an eclectic array of unique businesses and creative artisans, making it a place like no other.

Enterprising locals have come up with plenty of ways to welcome new residents. The town's working class heritage has not been lost and can be explored at the Kandos Museum and Visitor Information Centre.

The town is just a stone's throw from Dunns Swamp, which was originally built to provide water for the Kandos Cement Works, which provided the cement that built the Sydney Harbour Bridge. Kandos is a great base to explore this popular camping and picnic area within the Wollemi National Park.



# HOUSEHOLD ESSENTIALS





# Waste

Mid-Western Regional Council undertakes kerbside collection as well as operating waste facilities and rural waste transfer stations.

A four bin system is in place in Mudgee, Gulgong, Rylstone, Kandos and the villages of Charbon and Clandulla.

For more information on what to put in each bin as well as collection days in your neighbourhood visit Council's website.



## WASTE FACILITIES AND RURAL WASTE TRANSFER STATIONS

Council operates three waste facilities (Mudgee, Gulgong and Kandos), and 12 rural waste transfer stations. Domestic waste and recycling materials are transported to the Mudgee Waste Facility for landfill or sorting and processing.

### Mudgee Waste Facility

31 Blain Rd, Caerleon (off Hill End Rd), Mudgee

Mon–Fri 8am to 5.30pm; Sat–Sun 8am to 5pm

Contact | 6378 2850

### Gulgong Waste Facility

62 Mineshaft Lane, Gulgong

Mon–Fri 8am to 4.30pm; Sat–Sun 8am to 5pm

Contact | 0419 261 488

### Kandos Waste Facility

110 Kandos Tip Road, Kandos

Mon–Fri 8am to 4.30pm; Sat–Sun 8am to 5pm

Contact | 0428 490 100



# RATES







## Rates

Rates are used to maintain and improve services and facilities for the community.

Income that Council receives from rates provides funding for a broad range of services including roads and bridges, car parking, footpaths, cycleways and streetscapes, water supply and sewerage, waste management, stormwater, libraries, airport facilities, cemeteries, swimming pools, parks and reserves.

The Valuer General supplies land values to councils to use in setting rates. Councils receive new land values for rating every three years.

Mid-Western Regional Council calculates rates by combining the land value of the property and a fixed amount per property.

## How to pay your rates

An Annual Rates and Charges Notice is issued to each property in July with instalment reminder notices issued in October, January and April.

Rates are payable in quarterly instalments due in August, November, February and May.

If you elect to pay by quarterly amounts, individual notices will be issued at least one month prior to these dates. Should you wish to pay in full, payment must be received by the date of the first instalment.

Pay:

- Online via Council's website
- BPAY
- Direct Debit
- Through any Australia Post Office. Please ensure you take your Rates and Charges or Water Consumption Notice with you. Payment can be made via cash/cheque/eftpos

## Water

Council supplies water to Mudgee, Gulgong, Rylstone and Kandos via three treatment facilities.

If water is connected to your property this means that you will pay for the water you use. Council reads meters four times per year with accounts being issued in January, April, July and October.

Sign up to Council's Smart Water Meter Portal, YourWater, and keep track of your water use. Receive daily data on water use in the home, review water charges, set up email and SMS alerts to notify of possible water leaks and high consumption periods.

Register at [yourwater.midwestern.nsw.gov.au](http://yourwater.midwestern.nsw.gov.au)

- By mail by sending a cheque or money order payable to Mid-Western Regional Council with your notice
- Telephone payments using the reference number on your notice with a MasterCard or Visa credit card can be made by calling 1300 133 369
- In-person at any of Council's Customer Service Centres:

### **Mudgee**

86 Market Street, Mudgee  
Mon–Fri 8am to 4.30pm

### **Gulgong**

109 Herbert Street, Gulgong  
Mon–Fri 8am to 1pm; 1.45pm to 4.30pm

### **Rylstone**

7 Louee Street, Rylstone  
Mon–Fri 8am to 1pm; 2pm to 4.30pm



# Planning and Building

Council's Planning and Development Department helps to conserve, protect and enhance the natural and built environment of the Mid-Western Region and to improve the quality of life for our community and future generations.

Council administers the Mid-Western Regional Local Environmental Plan 2012, which guides planning decisions for the local government area. This is achieved through zoning and development controls, to provide a framework for the way land can be used and to ensure development is done appropriately.

## HEALTH AND BUILDING

Council's Health and Building Department can assist with the lodgement and approval of Construction Certificates, Complying Development Certificates, Pool Compliance Certificates, s68 plumbing and drainage including onsite sewage management systems, food premises fitouts, bushfire assessments and Building Information Certificates.

A Duty Health and Building Inspector is available to assist with building enquiries between 8.30am and 4.30pm Monday to Friday at Council's Mudgee Customer Service Centre. You can also contact the Health and Building Department by phone or email to make an appointment or speak with a Health and Building Inspector.

## HERITAGE CONSERVATION

In recognition of its rich history and heritage, Council has listed a comprehensive range of locally and state significant heritage items to ensure their continued preservation. Council recognises more than 550 individually listed heritage items and four heritage conservation areas in Mudgee, Gulgong and Rylstone.

Each conservation area contains a unique blend of historic buildings, parks and trees, monuments and artefacts.

## PLANNING

Council's Planning Department can help you with subdivision and boundary adjustment enquiries, dual occupancy and secondary dwellings, commercial and industrial zoning, dwelling entitlements, home businesses and industry, signage for businesses and private houses, changes of use of house and building, notifying liquor licence approvals and covenants.

A Duty Town Planner is available to assist with planning enquiries between 8.30am and 4.30pm Monday to Friday at Council's Mudgee Customer Service Centre. You can also contact the Planning Department by phone or email to make an appointment or speak with a Town Planner.





# PROPERTY





# Libraries

Library branches are located in Mudgee, Gulgong, Rylstone and Kandos. Each offer free computers and public Wi-Fi access, local history materials, a variety of children's programs and school holiday activities. Join your local library and freely access books, talking books, DVDs, magazines and an online collection of eBooks, eAudiobooks, digital magazines, and a range of resources for research and study.

Computer bookings can be made either in-person or by phoning the library. Printing, photocopying, scanning, faxing and laminating services are also available on request. Mudgee Library has two multi-purpose meeting and training rooms seating up to 30 people for hire during library hours.

For those unable to get to a library, Council operates a Mobile Library Van which visits rural schools, nursing homes, housebound residents and outlying villages. Check Council's website for the schedule.

## **Mudgee Library**

64 Market Street, Mudgee  
Mon–Fri, 10am to 6pm; Sat 9.30am to 12.30pm

## **Gulgong Library**

109 Herbert Street, Gulgong  
Mon–Fri 8am to 5pm; Sat 9.30am to 12.30pm

## **Rylstone Library**

77 Louee Street, Rylstone  
Mon–Fri 8am to 4.30pm

## **Kandos Library**

Community Centre, Angus Avenue, Kandos  
Mon, Wed, Fri 9.30am to 5pm; Sat 9.30am to 12.30pm

## **Contact | 6378 2740**

e | [libraries@midwestern.nsw.gov.au](mailto:libraries@midwestern.nsw.gov.au)

# Pets

## **MUDGEE POUND**

There are often cats and dogs available for rehoming from the Council pound. Animals available for adoption can be viewed on Council's website. If you find a lost dog or cat please contact Council as soon as possible so that every effort can be made to reunite them with their owner.

## **OFF-LEASH DOG PARKS**

Let your furry friend run free at one of Council's off-leash areas.

**Mudgee** Pitts Lane, adjacent to  
Glen Willow Stadium

**Gulgong** People's Park on Wynella Street

**Rylstone** Rylstone Showground, along the river  
to the bridge

# Saleyards

Mudgee Regional Saleyards is a community facility owned and maintained by Council. Up to 60 sales are held at the yards each year bringing together buyers and sellers from across the region. Centrally located, the site reduces unnecessary travel, providing cost savings for buyers and sellers.

Cattle sales are held every Wednesday from 8.30am, followed by sheep and lamb sales at 11.30am. Store cattle sales are held on the last Thursday of the month from 1.30pm.

## **Mudgee Regional Saleyards**

61 Abattoirs Road, Mudgee  
Contact | 6378 2750





# FACILITIES





# ART AND CULTURE



// Mudgee Arts Precinct inaugural exhibition *Return to Homedale* by Guido Maestri







# Mudgee Arts Precinct

Mudgee Arts Precinct is a state-of-the-art purpose-built gallery, providing a collaborative and accessible space, bringing together artists and the community.

The Precinct was officially opened in November 2021 and has already exhibited works from international to local artists. The building houses the Mudgee Visitor Information Centre and includes community meeting spaces, office space, cafe and artist workshops for education, acting as a hub to promote, nurture and facilitate participation in art, creativity and cultural activities.

## **Mudgee Arts Precinct**

90 Market Street, Mudgee

Mon-Sun 9am to 5pm

# Public art collection

Council has a large sculptural component to its public art collection with a range of sculptural works using a variety of materials and techniques on display across the region.

This collection reflects natural and cultural heritage, engages with community and adds value to infrastructure, attractions and public amenity. Council is committed to developing this public art program and encourages the participation in and appreciation of art by our communities. A complete list of sculpture sites is available on Council's website.

# Town Hall Cinema

The Mudgee Town Hall Cinema is a volunteer run service that shows new release films one weekend a month. Tickets are available for purchase online via Council's website or in-person from Council's Mudgee Customer Service Centre. For session times and ticket prices visit Council's website.



# Swimming pools

There are three public swimming pools operated by Council in Mudgee, Gulgong and Kandos. The summer swimming season runs from the last weekend of September to the last weekend of April. Pools are open seven days a week, excluding Good Friday and Christmas Day. All pools are fully supervised by qualified staff.

Check Council's website for season opening times.

- Mudgee Pool** | 19 Short Street, Mudgee
- Gulgong Pool** | 109 Herbert Street, Gulgong
- Kandos Pool** | 3 Saville Row, Kandos

## Mudgee Water Park

Mudgee Water Park is an outdoor water park offering many fun-filled play opportunities for toddler aged children to young adults.

The water park includes a large water slide, rock pool, water spray platform, dumping bucket, spray cannons, jets and streams. Entry to Mudgee Water Park is included in the entry fee to Mudgee Pool.



// Mudgee Pool and Water Park



# FAMILY FUN







// Festival of Snags 2019, Mudgee Showground

Council manages a number of community buildings available for hire for both public and private events. To see a full list of venues or to book, visit Council's website.

## Showgrounds

---

**Mudgee Showground** is a popular space close to Mudgee CBD. Offering a variety of buildings and infrastructure, the showground is regularly used for annual shows, events and activities. The grounds are a popular venue for horse riding enthusiasts, with stabling facilities, round yard, dressage arena and oval.

**Rylstone Showground** offers several open grassed areas, including a large main arena which is enclosed by post and rail fencing. The grounds are used for sporting events by local soccer groups, Pony Club groups and as a rodeo arena during the Rylstone Show. The smaller ovals adjacent to the main arena are also used for dog shows and working dog trials.

## Halls

---

**Mudgee Town Hall Theatre** is a multi-functional cultural space capable of hosting live theatre, shows, balls, meetings, weddings, exhibitions, movie screenings and other large events. The theatre seats up to 200 people and includes a large curtained stage, green room, dressing rooms, showers and toilets, large kitchen and professional audio-visual system.





# VENUES FOR HIRE

**Gulgong Memorial Hall** is located in Herbert Street, close to the centre of town. It directly adjoins the picturesque Anzac Memorial Park and playground. The hall is an accommodating venue offering a variety of facilities and its central location makes it popular for meetings, birthday parties and dance classes.

**Rylstone Hall** is centrally located in the main promenade of the Rylstone shopping area. The hall includes stage, dressing rooms and kitchen. Off-street parking is available, and provides direct access. The hall is also located on the perimeter of Rylstone Showground, providing a scenic backdrop to any event.

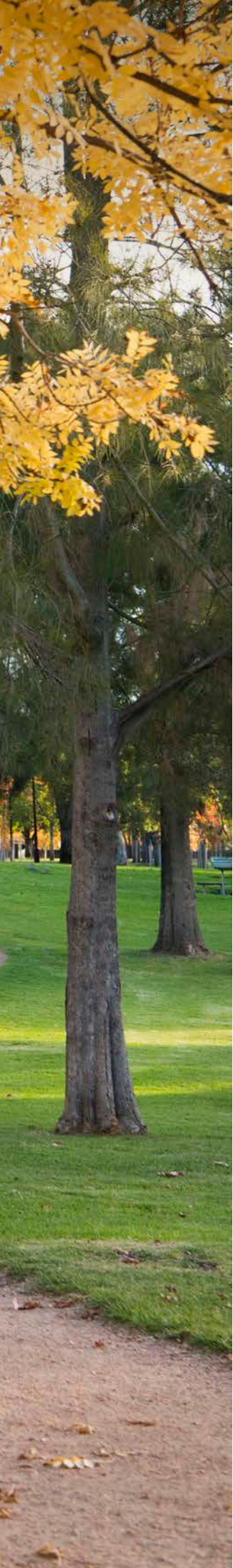
**Kandos Hall** is an historic building built in 1954 and is located near the centre of the town providing an easy walk to local shops and cafés. The hall offers a large area of open space suitable for exhibitions, balls, shows, and weddings. The hall includes stage, dressing rooms, kitchen, chairs and tables for hire.



# AMENITIES







Council maintains 69 parks, gardens and playing fields.

There is an abundance of shared pathways that weave their way on picturesque trails along river banks and through our towns and villages.

## Gulgong Adventure Playground

The Gulgong Adventure Playground offers interactive play for children of toddler age through to primary school. The new adventure playground includes slides, shelters, climbing equipment and a flying fox for all children to enjoy. With beautiful landscaping and picnic tables, the playground is the perfect place for a fun family day outside.

Located at Apex Park on Nandoura Street Gulgong, the adventure playground is situated between Gulgong Pool and Billy Dunn Oval. Entry is free.

## Playgrounds and skate parks

There are 36 playgrounds and four skate parks throughout the region for families and children to enjoy.

A number of these parks have seating as well as barbecue facilities. A full list of playgrounds and their locations is available on Council's website.

## Parents room

Public parenting rooms and baby change facilities are available in the following locations:

### **Mudgee Library**

64 Market Street, Mudgee

### **The Stables Car Park**

84 Market Street, Mudgee

### **Mudgee Town Hall Arcade**

Opposite Dad's Deli, Mudgee

### **Robertson Park**

Opposite The Stables,  
84 Market Street, Mudgee

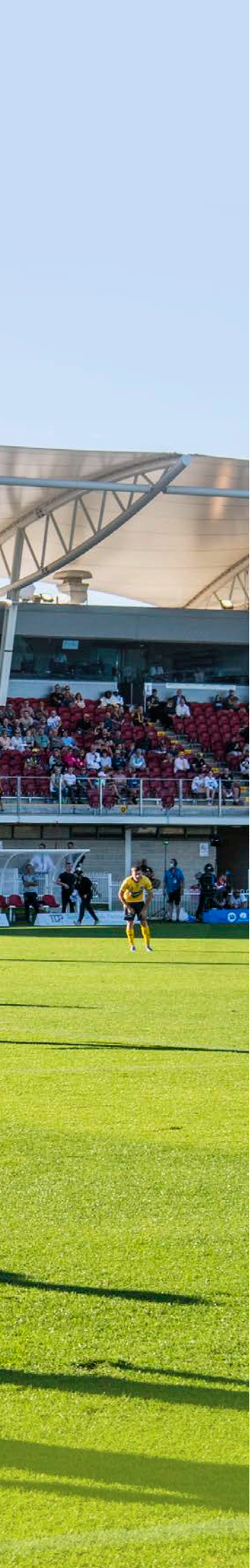


# RECREATION



// 2022 A-League Central Coast Mariners V Macarthur FC, Glen Willow Regional Sporting Complex, Mudgee





# Glen Willow

Council's Glen Willow Regional Sporting Complex is the region's premier sporting venue.

The facility was completed in February 2012 and has hosted a number of major events including five consecutive NRL Charity Shield games, NRL premiership games, A-League and Australian Rugby Union games.

This facility is among the newest, most sophisticated and best equipped stadiums available in regional NSW. It continues to receive outstanding testimonials and rave reviews from professional players, coaches, sports commentators, spectators, participants and community groups.

## Sporting fields

Sport is a major pastime in the Mid-Western Region, with 10 local sporting grounds and two regional sporting grounds accommodating all sports.

Each of these grounds has amenities and parking facilities. To book a sports ground, visit Council's website.

### **Mudgee**

Cahill Park, Lewis Street (adjacent to Mudgee Hospital)

Jubilee Oval, 193–199 Denison Street

Victoria Oval, 75 Denison Street

Walkers Oval, 24–34 Short Street

Westend Complex, 193–199 Denison Street

### **Gulgong**

Billy Dunn Oval, 7–19 Nandoura Street

Victoria Park, 16 Grevillea Street

### **Rylstone**

Rylstone Showground, 21 Cudgegong Street

### **Kandos**

Darton Park, 10 George Street

Waratah Park, 76 Cooper Drive

Simpkins Park, 62 Cooper Drive



# EVENTS







The Mid-Western Region offers a jam-packed event calendar. Visit Council's website for a list of annual events.

## Flavours of Mudgee

Held on the fourth Saturday of September each year, Flavours of Mudgee is the highlight event of the Mudgee Wine and Food Festival.

More than 70 stallholders line Church and Market streets in Mudgee's stunning CBD to serve the region's best produce to more than 12,000 festival-goers.

Flavours of Mudgee has continued to grow in popularity over its six years, generating an estimated \$2 million for the local economy each year.

Visit [flavoursofmudgee.com.au](http://flavoursofmudgee.com.au)

## Glen Willow: The home of football

Council has successfully hosted many major sporting events at Glen Willow Regional Sporting Complex, most recently the Charity Shield (2018–2022), NRL games in 2016–2022, and A-League games in 2019 and 2022.

Council continues to work with the NRL and other major sporting leagues to attract further games to the region.

## Australia Day

Australia Day is one of many community celebrations held throughout the year.

Highlights of the day include the presentation of the Australia Day awards for Citizen of the Year and other local honours, a citizenship ceremony and activities for the whole family including free barbeque breakfast, live music and market stalls.



# Family Day Care

Family Day Care is a quality child care service which offers professional care and education for children aged six weeks to 12 years, in the private homes of registered Family Day Care Educators.

Educators are licensed to have up to seven children (including their own children), but only four children under school age.

Family Day Care is registered for families who are eligible to receive the Federal Government Child Care Subsidy (arranged through Centrelink).

**Contact** | 6378 2730

**e** | [family.daycare@midwestern.nsw.gov.au](mailto:family.daycare@midwestern.nsw.gov.au)

82 Market Street, Mudgee

# Meals on Wheels

Meals on Wheels is an essential community service which offers a range of meal options for the aged and younger people with disabilities and their carers. Prospective clients can refer themselves to the service or be referred by a friend, relative, doctor or any medical service.

**Contact** | 6378 2714

88 Market Street, Mudgee

# Mudgee Community Transport

Mudgee Community Transport is a community service providing friendly, personal and caring transport for the aged, as well as those in the community at a disadvantage because of limited public transport services.

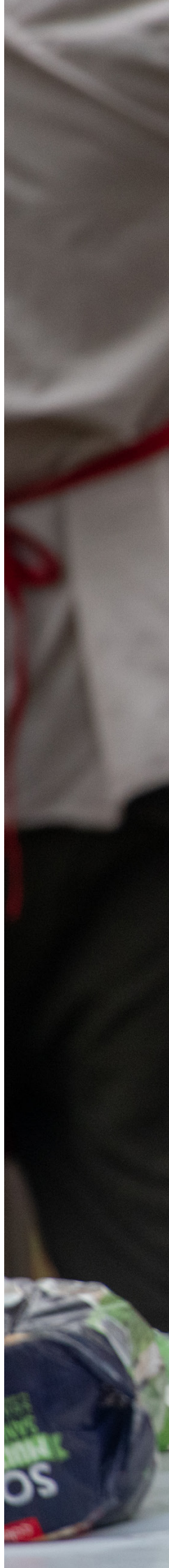
Please contact the team to discuss whether you are eligible. To learn more about any of these services, visit Council's website.

**Contact** | 6378 2710

88 Market Street, Mudgee

# Want to volunteer?

There are a number of organisations with volunteering opportunities available throughout our region from general community volunteering to more specialised opportunities, such as driving for Mudgee Community Transport or helping out with local disability support services. To learn more, contact Council's Community Development Officers on 6378 2720.





# SUPPORTING OUR COMMUNITY





Council maintains a road network of approximately 2,460km. Council's prime objective in managing the region's road network is to provide infrastructure that allows safe travel within the region. This involves both maintaining existing roads and planning for future improvements.

## Driving

Located less than 270km northwest of Sydney, the Mid-Western Region is connected to major regional centres such as Dubbo, Orange and Bathurst by a high quality road network.

### **3.5 hours from Sydney**

via the Great Western Highway (through the Blue Mountains) or the Bells Line of Road (through Windsor/Richmond).

### **4 hours from Newcastle**

via the Bylong Valley Way (through Bylong) or the Golden Highway (through Merriwa).

### **5 hours from Canberra**

via Cowra/Wellington or Cowra/Bathurst.

## Mudgee Airport

Mudgee is just 40 minutes from Sydney by air. FlyPelican operates a regular passenger service direct from Mudgee to Sydney and return.

To book visit [flypelican.com.au](http://flypelican.com.au)

Mudgee Airport is located five kilometres from town with a modern refurbished terminal, conference room, private aircraft parking and refuelling facilities available.

## TrainLink services

The NSW TrainLink Regional Coach Service travels to Mudgee and Sydney return (via Lithgow). The region can also be accessed from Sydney via train to Lithgow and then changing over to the NSW TrainLink Regional Coach Service. For more information please visit Transport NSW at [transportnsw.info/regional](http://transportnsw.info/regional)





# ROADS AND TRANSPORT





# Your Council

Mid-Western Regional Council is your Council. We are here to serve you and to help our community prosper and grow through good governance.

Nine Councillors elected by the community make up Mid-Western Regional Council. The Mayor is elected annually by the Councillors. The operational management of the Council is led by the General Manager, and supported by three directors responsible for Operations, Development and Community, as well as a Chief Financial Officer and Executive Manager, People and Performance.

Council holds monthly meetings on the third Wednesday of the month. The public is welcome to attend at 86 Market Street, Mudgee, alternatively meetings are live streamed via Council's website.

## Work with us

Mid-Western Regional Council is an award winning organisation and offers a range of career opportunities across 70 diverse business units ranging from planning and development to water supply, parks and gardens, libraries, operations and much more. Council is an equal opportunity employer and values diversity in its people. To learn about current vacancies and careers at Council visit the website.

## Report a problem

Do you need to report a problem to Council?  
Or wish to request work? Let us know.

### Contact

**w** | [midwestern.nsw.gov.au](http://midwestern.nsw.gov.au)

**t** | 6378 2850

**e** | [council@midwestern.nsw.gov.au](mailto:council@midwestern.nsw.gov.au)

### Visit

86 Market Street, Mudgee

109 Herbert Street, Gulgong

77 Louee Street, Rylstone





# GET IN TOUCH





# KEY CONTACTS





# Key contacts

## Emergency Services

Emergency	000	Rylstone Police	6379 1000
Mudgee Police	6372 8599	Kandos Police	6379 4000
Gulgong Police	6374 1300	State Emergency Service (SES)	132 500

## Commonwealth Government Departments

Australian Electoral Commission	132 326
Centrelink Family Line	136 150

## NSW Government Departments

Department of Family and Community Service	1800 422 322
Department of Ageing, Disability and Homecare	1300 134 450
Service NSW (includes Roads & Maritime Services)	137 788
SafeWork NSW	131 050
Department of Family & Community Services (includes Housing NSW)	6372 5700
Department of Education	1300 679 332
National Parks & Wildlife	6370 9000

## Post Offices

80 Market Street, Mudgee	131 318	32 Angus Avenue, Kandos	6379 4200
94 Herbert Street, Gulgong	6374 1292	78 Louee Street, Rylstone	6379 1126

## Visitor Information Centres

e | [info@visitmudgeeregion.com.au](mailto:info@visitmudgeeregion.com.au)

90 Market Street, Mudgee	6372 1020	47 Louee Street, Rylstone	6379 1345
Cnr Mayne and Medley Streets, Gulgong	6374 1204	22 Buchanan Street, Kandos	6379 4600

## Hospitals

Mudgee Hospital	6371 9700
Rylstone Multi-Purpose Service	6357 8100
Gulgong Multi-Purpose Service and Health One	6374 1200



